

be scanned into RMS and transmitted to ECP for onward publication on ECP website.

## Things to Consider

- There are five legitimate reasons that a numerical difference may arise between Provisional Results and Final Consolidated Results. These are due to:

- (i) **The correction of arithmetic errors**
- (ii) **Recounts**
- (iii) **Postal Ballots**
- (iv) **Invalid ballots declared valid (which may include invalid Tenders and Challenged ballots)**

All of these are done by the RO as provided for in the Elections Act 2017 and Rules.

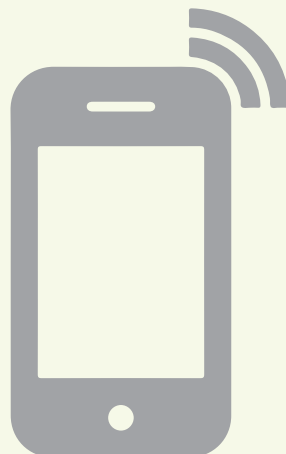
- Paper Forms are the definitive legal results channel. RMS & RTS are digital tools used to support the results process.
- RMS software and data are secured using a variety of information system security mechanisms.
- RMS data is backed up locally at the RO office, and transmitted to the ECP HQ RMS servers where it is also backed up.

## RTS - What is RTS?

### Results Transmission System

As provided in the Election Act, a Presiding Officer (PrO), using a mobile app, may transmit a snapshot of the Form 45 as well as data entry of Total Valid Votes polled in favour of each candidate from that polling station. Where information is available via RTS, this may assist the RO in preparing draft Form 47.

The information transmitted via RTS is provisional. All consolidations and final election results will be based on paper Form 45 delivered in person by PrOs to ROs and processed with the support of RMS.



Election Commission  
of Pakistan

## Election Results Management - 2018

Delivering Swift,  
Systematic, Transparent  
Election Results in 2018

Results Management by Returning Officers (ROs) is achieved using a hybrid paper/electronic system. All official results (whether provisional, consolidated or final - Forms 47, 48, 49 respectively) are on a paper form, stamped and signed by the Returning Officer (RO). To manage electoral preparations and to assist in preparing these forms, the RO is supported by two electronic systems - Results Management System (RMS) and Results Transmission System (RTS).

## What is the RMS?

- The RMS is a computer application installed at the office of the RO. The system is an electronic form-based software where Data Entry Operators (DEOs), reporting to the RO can enter data like names of candidates, number of registered voters, name and number of polling station, number of votes cast to each candidate and can quickly generate draft forms that used to take hours to fill by hand in the past.
- The DEOs are highly trained staff who serve as a support to the ROs.
- The RO requests the DEO to enter data into forms, and generate more forms out of it (for example, Form 45 data is entered, and draft Form 47 may be generated for the RO).
- The consolidated forms are then scanned back into RMS, then transmitted to ECP/PEC HQ and subsequently published on the ECP website.

## The Benefits of RMS

RMS enables ECP to compile the complete result of elections electronically so that the result is easily verifiable and auditable. This is made possible by the following:

- Efficient and Accurate Consolidation of Results.
- ROs are able to keep an electronic record of the election results including information about candidates, list of polling stations, and results.
- Political Parties, Candidates and other Stakeholders can get access to Polling Station level provisional results.
- ECP is able to generate more accurate reports on voter turnout, polling station based election results, gender-disaggregated voting data.
- All official results forms can be scanned and uploaded onto the ECP website for maximum transparency.

## How It Works – RMS Modules

RMS facilitates ROs in three core functions of Elections Management:-

### 1. Polling Scheme Module

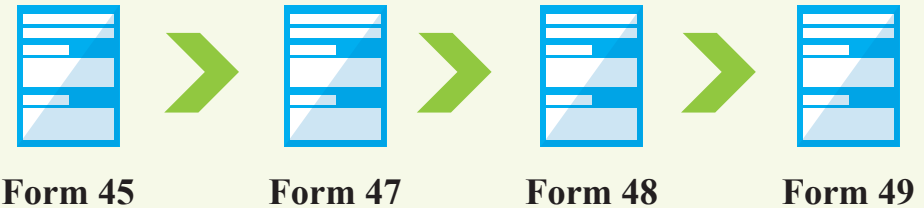
ROs, with the support of their DEOs, are able to finalize their polling schemes on the Polling Scheme module of RMS. They can enter details like name of polling station, the location of the polling station and number of registered voters in the polling scheme. The key output of Polling Scheme module is draft Form 28.

### 2. Contesting Candidate Module

After successfully finalizing the Polling Scheme, the RO and the DEO can move on to fill out candidate information – name, party symbol, election constituency etc. The Contesting Candidates Module can then output a draft Form 33 - List of Contesting Candidates for the RO. Having the candidate names in RMS will speed up data entry on election night.

### 3. Result Management Module

On election night, results from polling stations in the form of Form 45 will be shared with RO in hard copy. The DEO can start entering this information in their RMS. Once the information is added to this module, the Result Management System can automatically generate draft forms 47, 48 and 49.



The module will then transmit data securely to the main server where it can be promptly posted on the ECP website or shared with electoral stakeholders. All outputs from RMS are drafts, which must be checked for completeness and accuracy by the RO. Once he or she stamps and signs the forms, they become official documents. Signed/stamped Forms may